



# Frillesa

## Modern cubism with a natural look

This view is actually the rear of the house and what you can't see is that this is an L-shaped home and much bigger than it looks. The pool is optional by the way!

This part of the house includes the kitchen, dining area and lounge as well as the master suite. Imagine waking up to a beautiful view of your garden (or your own pool). The other wing has two bedrooms, bathroom and utility plus an additional sitting room, virtually creating a self-contained annexe. Ideal for segregating noisy kids or giving privacy to guests or live-in relatives.

Externally the house is shown timber clad but is it adaptable and could be finished in render if required. Fully customisable to allow you to create the layout to suit your lifestyle.



Entrance facade



Gable facade



Garden facade

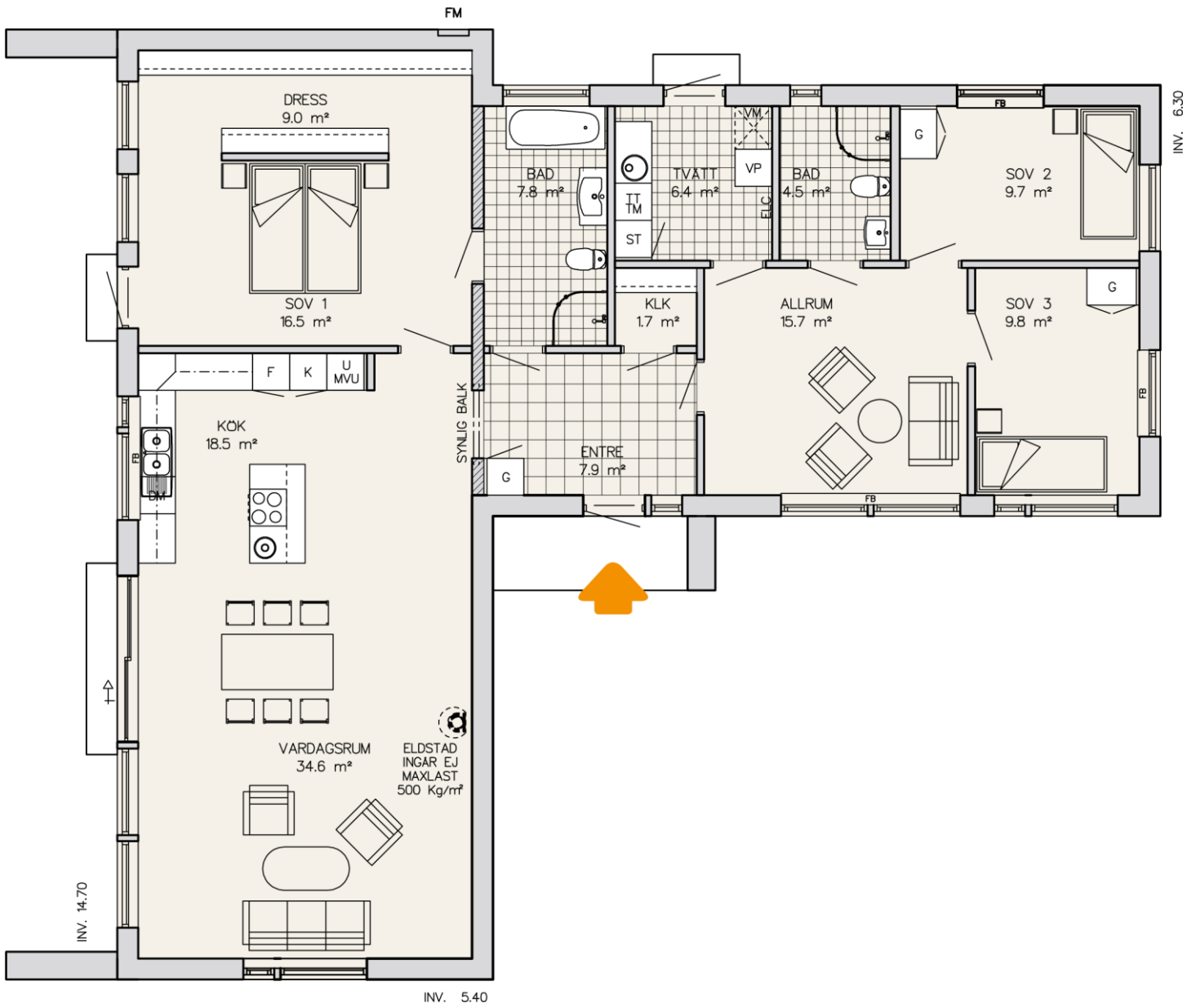


Gable facade



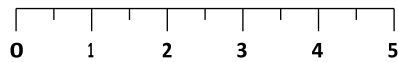
www.scandinavianhomesltd.com  
Telephone: 0845 299 6337

# Single-storey house with 5 rooms and kitchen



total living space 147 m<sup>2</sup>

Scale 1:100 (10 mm = 1 m)



Scandinavian  
Homes

[www.scandinavianhomesltd.com](http://www.scandinavianhomesltd.com)

Telephone: 0845 299 6337