



SKARPUU

A beautiful home with highly individual style

Striking architecture characterises this house with external finishes of part timber cladding and part render. A feature chimney stack gives the house a traditional look and complements its modern, clean lines. Many full length windows allow maximum light into the house, complemented by two sets of roof-lights. This is a one and a half storey house, the upper floor being entirely within the pitched roof space. The lower floor contains the main living rooms comprising a large walk through kitchen, laundry room, office or guest bedroom and a spacious dining and living room. This area is stepped down from the entrance hall creating an attractive split level. Upstairs has three bedrooms, a large family bathroom and a further relaxation/reading room lit by roof-lights. The spectacular stairwell is open to the roof and lit by six roof light windows.



Entrance facade



Gable facade



Garden facade

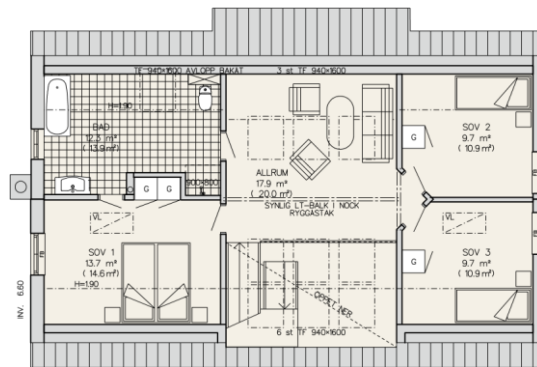
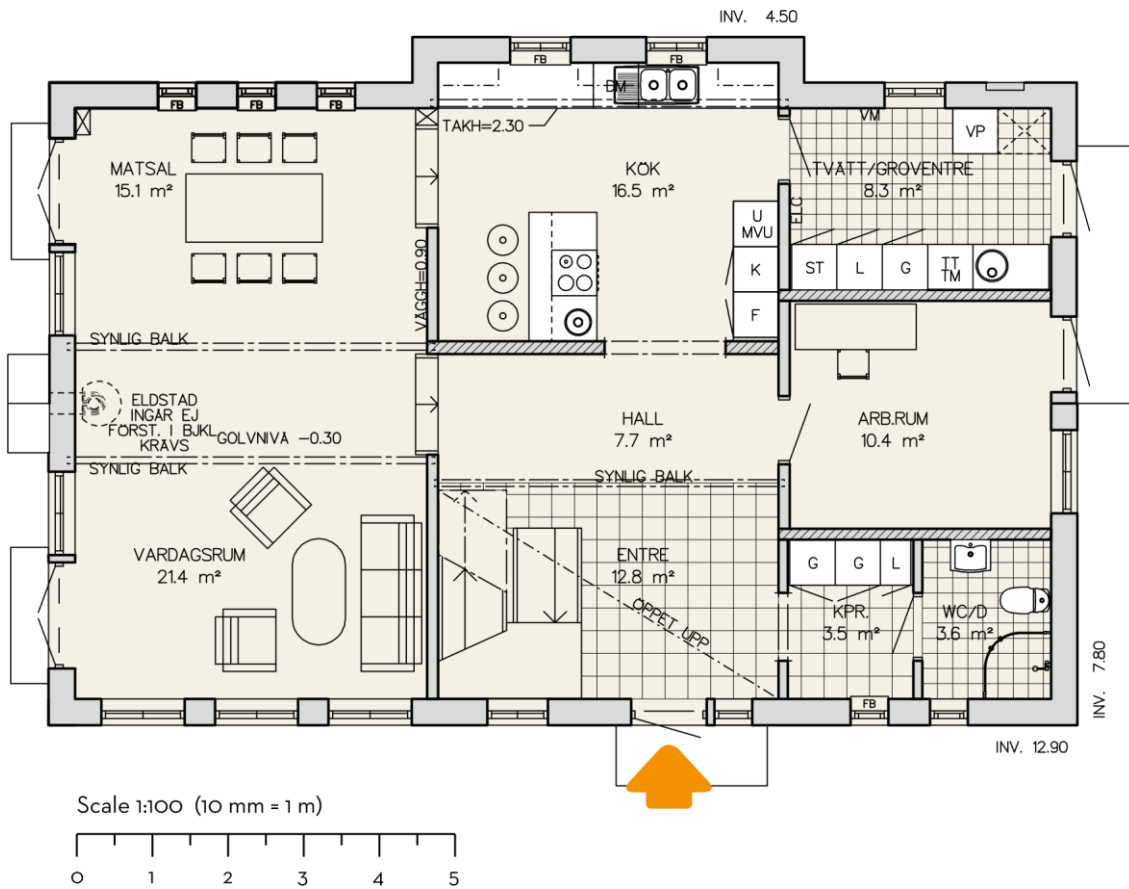


Gable facade



www.scandinavianhomesltd.com
Telephone: 0845 299 6337

1.5-storey house with 6 rooms and kitchen



total living space 174 m²

Architect sAR/msA fredrik martin



www.scandinavianhomesltd.com

Telephone: 0845 299 6337