



DJURA

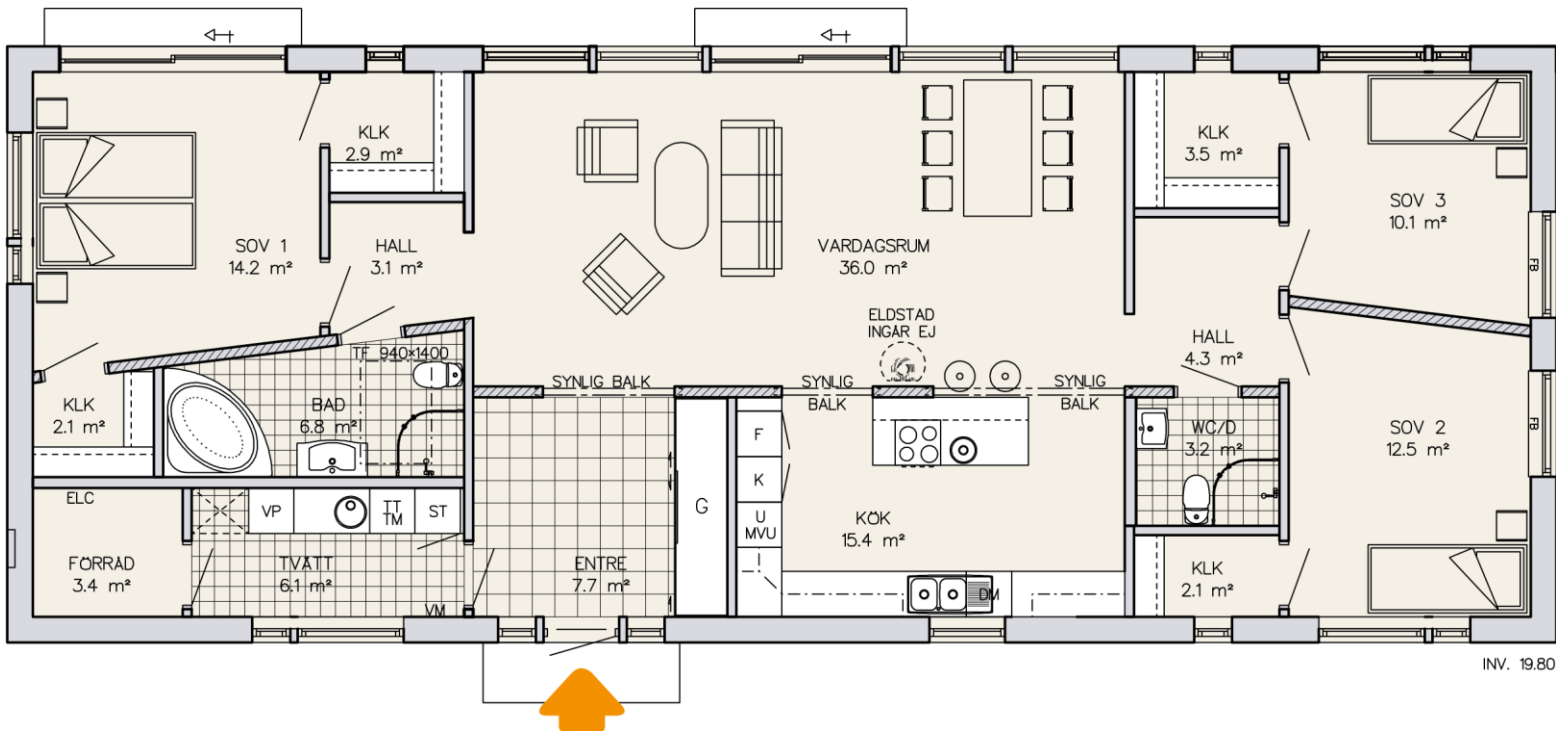
Ultra-modern minimalism

This house has a clean, ultra-modern character, softened by its natural timber cladding. The front is relatively private whilst sliding doors and picture windows at the rear open onto the garden. Storage, often overlooked in house designs, has been given real consideration in this house and there is ample wardrobe space and a separate store room, off the utility. The kitchen is separated from the open plan dining and living area by an island with integrated breakfast bar. All three bedrooms have walk-in wardrobes and the master bedroom has an en-suite bathroom. The other two bedrooms share a separate shower room, effectively creating a guest suite or children's space. The interesting use of angled walls makes maximum practical use of the available space.



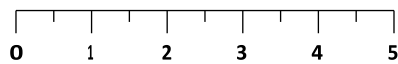
www.scandinavianhomes.com
Telephone: 0845 299 6337

Single-storey house with 4 rooms and kitchen



total living space 143 m²

Scale 1:100 (10 mm = 1 m)



Scandinavian
Homes

www.scandinavianhomes.com

Telephone: 0845 299 6337