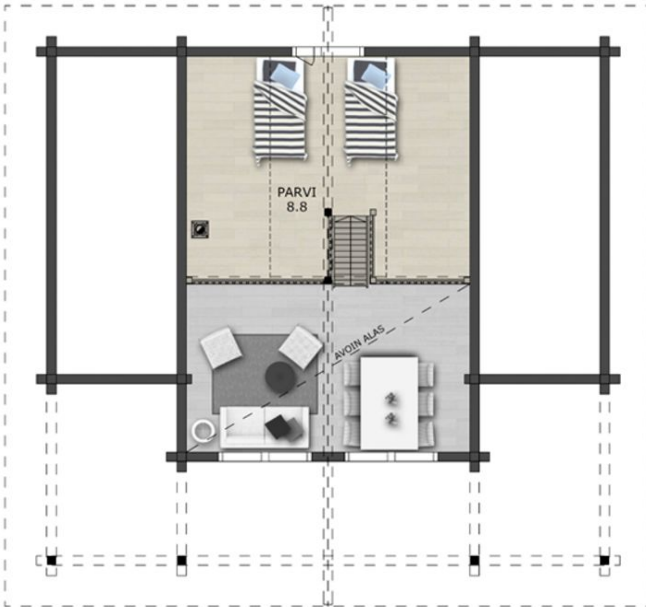


# Loiste 88A/B/C/D Holiday Home



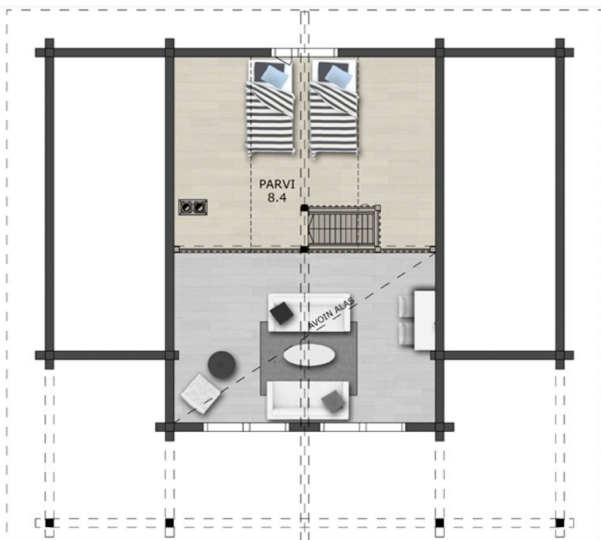
Loiste 88A Ground Floor Plan



Loiste 88A First Floor Plan



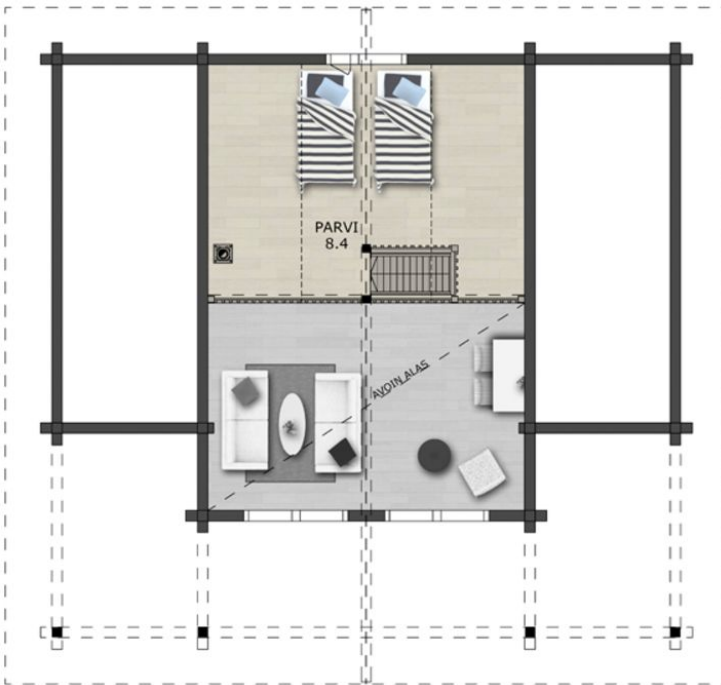
Loiste 88B Ground Floor plan



Loiste 88B First Floor Plan



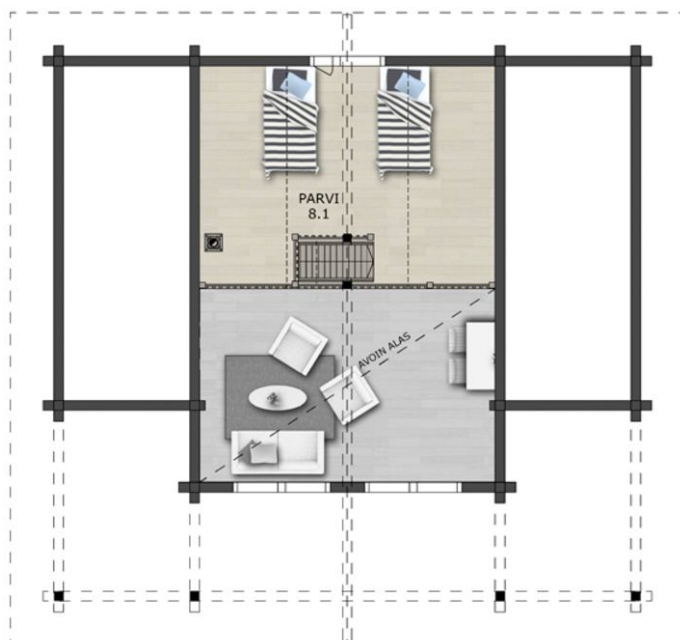
Loiste 88C Ground Floor Plan



Loiste 88C First Floor Plan



Loiste 88D Ground Floor Plan



Loiste 88D First Floor Plan

**All Variations:**

Gross floor area  $79 + 9 = 88\text{M}^2$  / Internal floor area  $72 + 9 = 81\text{m}^2$

There are four variations of this design, giving a potential for up to five bedrooms. All are stylish modern variations on the traditional log cabin. Perfect for holiday cottages.

The large roof overhang gives a practical covered patio area for al fresco dining or just relaxing in sun or rain.

Constructed with insulated log walls and traditional or modern corner joints. There's plenty of good design in these houses, both inside and out.

**Options:** Kit supply only or shell build

Turnkey build solution

Alternative roof coverings

Customised floor plans

Unlimited choice of exterior colours

**Features:** Double glazed high quality timber windows; U value 1.2W/m<sup>2</sup>K

Solid slab foundation or suspended timber floor (insulated)

Interior timber panelled or plaster-board

Insulated walls and ceilings to comply with building regulations



[www.scandinavianhomes.com](http://www.scandinavianhomes.com)

Telephone: 0845 299 6337