



MARIEHOME

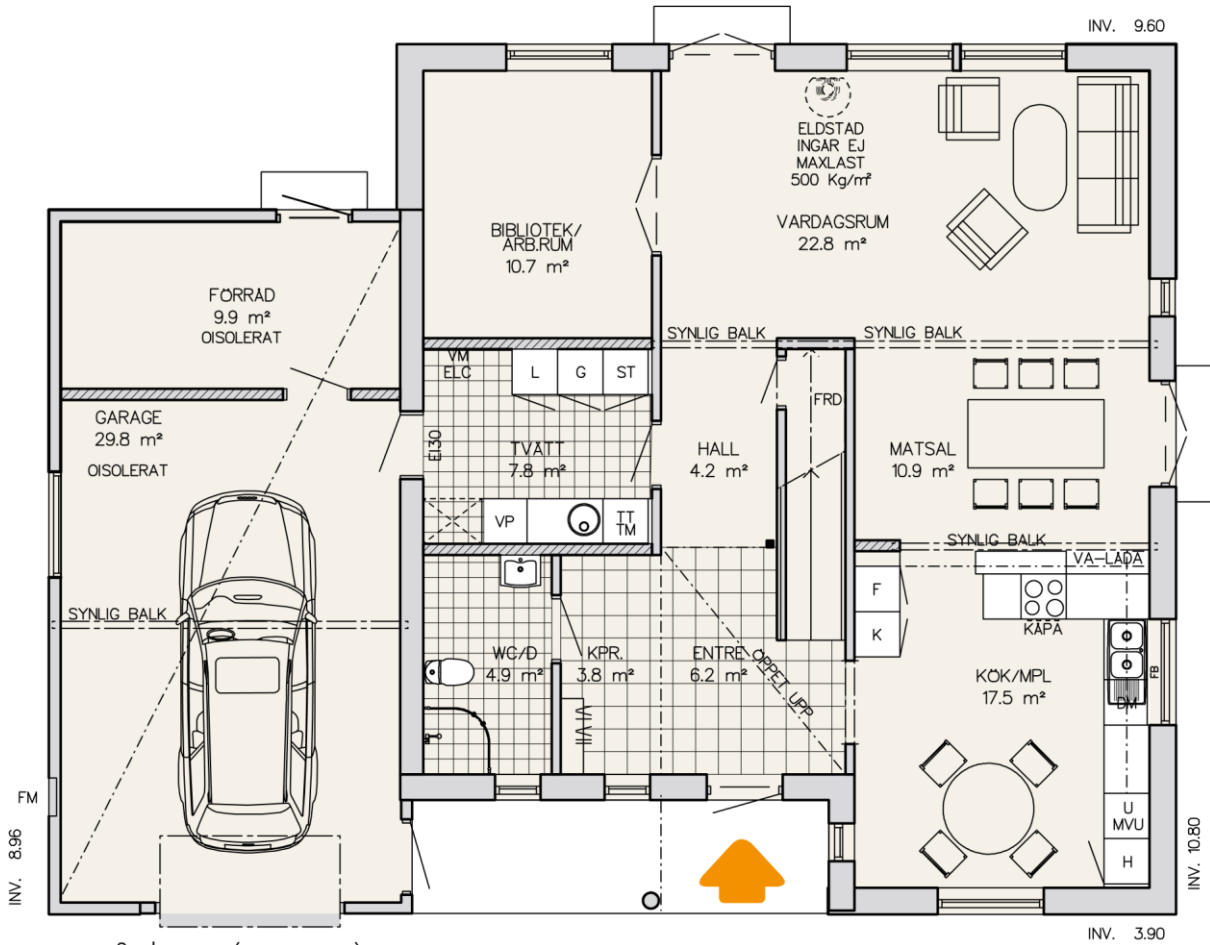
Modern with shades of art deco

This house has popular retro styling with references to the art deco movement, complemented by more contemporary features. A recessed sun terrace at the front of the house leads through the entrance door to a hallway, off which is a well-lit breakfast kitchen and separate dining area. Porthole windows feature in the front of the house and the door, to the left of which are a cloakroom and shower room. The laundry room allows access to the outside via the integral garage and workshop. At the rear is a large living room with deep windows and a door to the garden, with a study off to one side. Above the garage is a roof terrace of nearly 40m², perfect for enjoying meals or sunbathing in privacy, accessed from the upstairs living area and one of the three bedrooms. The family bathroom is situated between two of the bedrooms and storage is provided by two walk-in closets.

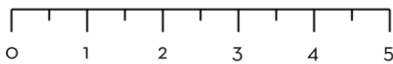


www.scandinavianhomesltd.com
Telephone: 0845 299 6337

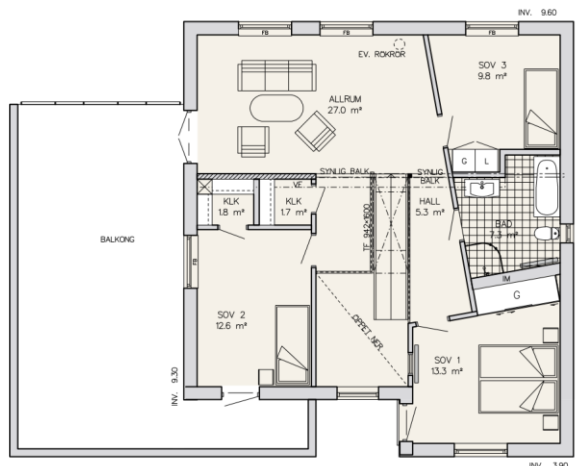
Two-storey house with 6 rooms and kitchen



Scale 1:100 (10 mm = 1 m)



Total living space 184 m²
 Architect SAR/MSA Johan Danielsson



Scale 1:200



www.scandinavianhomesltd.com
 Telephone: 0845 299 6337