

KotiOnni 193 Four Bedroom Home



KotiOnni 193

A sumptuous log home, the KotiOnni 193 has a well thought out layout with a large covered terrace and balcony to the rear (shown in the picture above).

On the ground floor, an entrance hallway leads into the large open plan living area with dining space and kitchen off to one side. At the other side is a utility room and sauna complex, as well as study. Should you not want a sauna, this area could be repurposed, perhaps to provide a downstairs bedroom and en-suite. Upstairs there are four bedrooms, family bathroom and a large landing area which can be used as an extra sitting area opening onto the large balcony.

Our log homes may be finished in any colour(s) and roofed in any material to complement their surroundings. The home above is shown with a smart, modern steel roof, however alternatives include slates or tiles. All our log homes are constructed with insulated log walls to exceed UK building regulations, with a choice of log thickness and level of insulation, up to passive standard. Cross-jointed or modern corner joints are optional to give a traditional or contemporary look.



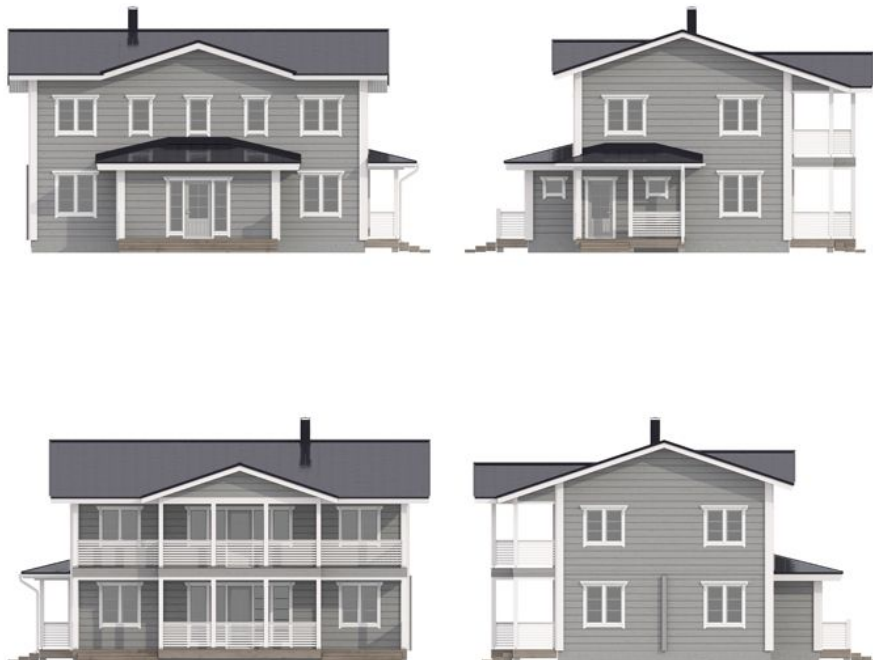
KotiOnni 193 Ground Floor Plan

Downstairs gross floor area 105m², living space 92 m².



KotiOnni 193 First Floor Plan

Upstairs gross floor area 87m², living space 82 m². Total gross floor area 193m², living area 174m².



Options:

- Kit supply only.
- Shell build.
- Turnkey build solution to a specification agreed with you.
- Alternative roof coverings.
- Customised floor plans.
- Choice of solid slab foundation or suspended timber floor (insulated).
- Interior timber panelled or plaster-boarded or a mix.

Features:

- Triple glazed high quality timber/aluminium windows; Argon filled sealed units, U value 1.0W/m²K. Aluminium outer powder coated to any RAL colour; inside timber frame white.
- Highly insulated external doors.
- All exterior doors use the same key.
- Lacquered pine solid interior doors with chrome or brass handles and hardwood threshold.
- Insulated walls and ceilings to exceed building regulations.