

## Backas 165 - 4 bedroom log home



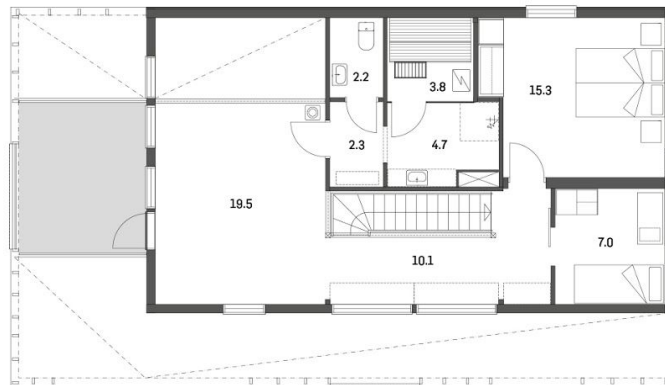
The Backas 165 is a contemporary four bedroomed log home, with thoughtful storage space, and an open plan layout. The extensive covered areas provide a choice of extra outdoor living areas, sheltered from excessive sun, allowing you to be outside whatever the weather.

This home is constructed with insulated log walls to exceed UK building regulations, with a choice of log thickness and level of insulation. Your log home can be finished in any colour(s) and roofed in any material to complement the surroundings.

The interior layout can be configured to suit your requirements, subject to building regulations and structural constraints.



### Backas 165 Ground Floor Plan



### Backas 165 First Floor Plan

Total living area 149 m<sup>2</sup>.

The house and covered terrace footprint is 15.6m by 8.8m, plus space for steps to the terrace.

**Options:**

- Kit supply only or shell build
- Turnkey build solution
- Alternative roof coverings
- Customised floor plans
- Interior timber panelled or plaster-boarded

**Features:**

- Triple glazed high quality timber/aluminium windows; Argon filled sealed units, U value 1.0W/m<sup>2</sup>K (depending on window style). Aluminium outer powder coated to any RAL colour; inside timber frame white.
- Entrance door with insulated core and double glazed window light. Standard colour white (options available).
- All exterior doors use the same key.
- Lacquered pine solid interior doors with chrome or brass handles and hardwood threshold.
- Insulated walls and ceilings to exceed building regulations.