

## Marina log home range



The Marina comes in two sizes - the Marina 50 A and B (shown above), and the Marina 64.

The Marina 50 provides a delightful small home, which is configured with one bedroom in the 50A model, with an optional mezzanine floor accessed via a space-saving stair, to give storage, office, or perhaps children's play space upstairs.

The 50B version has two bedrooms on the ground floor, and again can optionally have a mezzanine floor. Total living area approximately 45 m<sup>2</sup>. Layouts can be customised to suit your requirements.

The Marina homes are constructed with insulated log walls to exceed UK building regulations, with a choice of log thickness and level of insulation, up to passive standard. Cross-jointed or modern corner joints are optional to give a traditional or contemporary look.

Our log homes may be finished in any colour(s) and roofed in any material to complement their surroundings. The home above is shown with felt shingles, but alternatives include slates, tiles and modern or traditional profiled steel sheeting.



**Marina 50 A Ground Floor Plan**



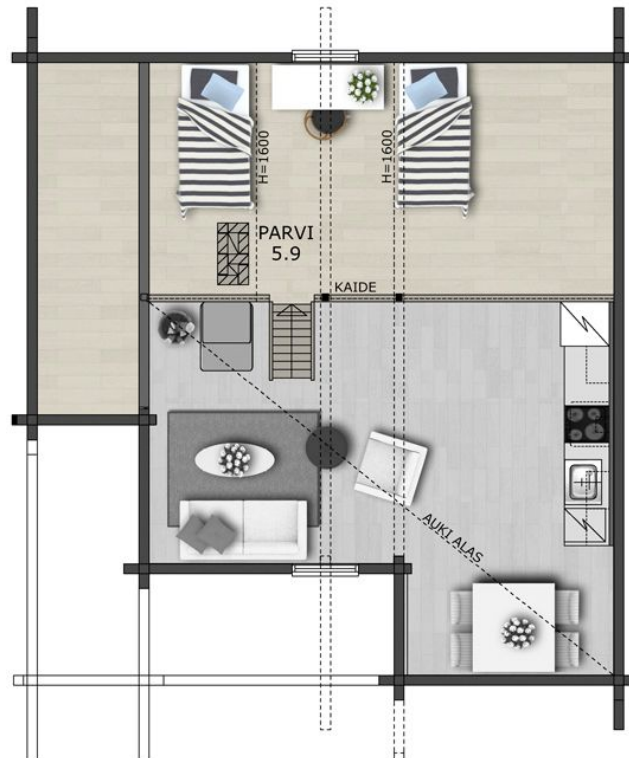
**Marina 50A or B Mezzanine Floor Plan**



The Marina 64 is a larger two-bed roomed home, with a mezzanine floor again accessed via a space-saving stair.



**Marina 64 Ground Floor Plan**



### Marina 64 Mezzanine Floor Plan

The total living area is approximately 52m<sup>2</sup> on the ground floor and 6m<sup>2</sup> on the mezzanine.

#### Options:

- Kit supply only
- Shell build
- Turnkey build solution
- Alternative roof coverings
- Customised floor plans
- Choice of solid slab foundation or suspended timber floor (insulated)
- Interior timber panelled or plaster-boarded

#### Features:

- Double glazed high quality timber windows; Argon filled sealed units.
- Artopine Skando entrance door 71mm thick panelled door with insulated core and double glazed window light. Standard colour white (options available).
- All exterior doors use the same key.
- Lacquered pine solid interior doors with chrome or brass handles and hardwood threshold.
- Insulated walls and ceilings to exceed building regulations.